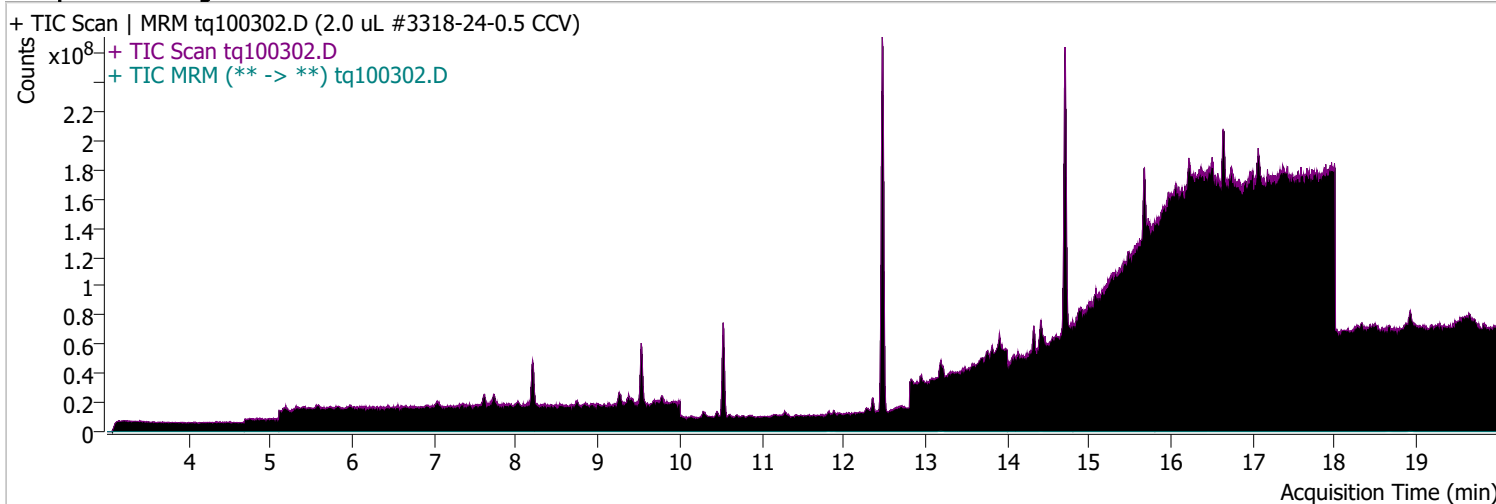


# Quantitative Analysis Sample Report

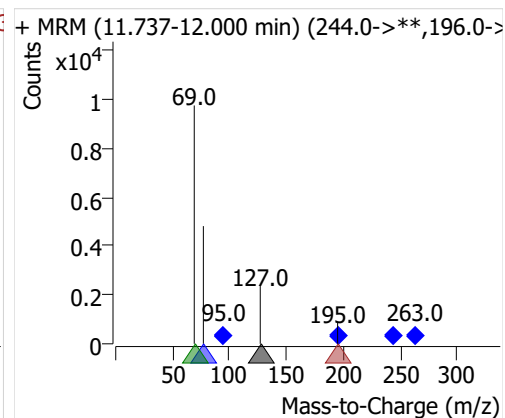
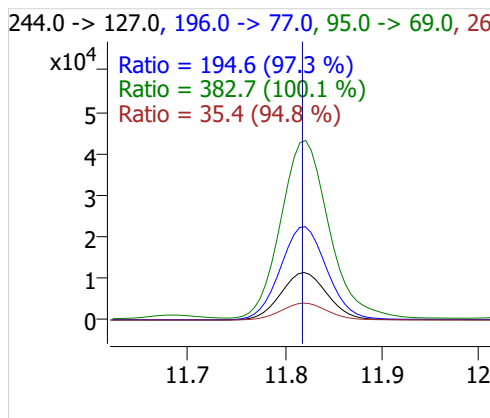
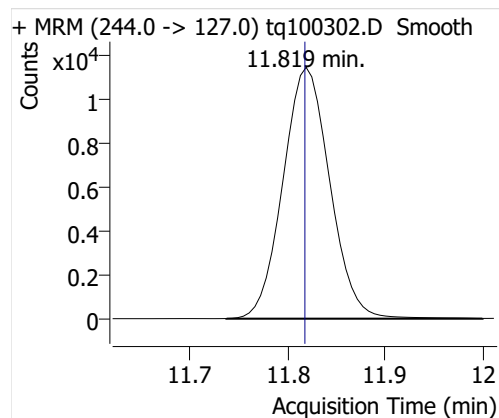
Batch Path	D:\MassHunter\GCMS\1\data\03OCT22\QuantResults\03oct22.batch.bin		
Analysis Time	10/4/2022 8:46 AM	Analyst Name	ES-AREA1\US32_USR_INS22923
Report Time	10/28/2022 2:14:22 PM	Reporter Name	ES-AREA1\US32_USR_INS22923
Last Calib Update	10/3/2022 8:55 AM	Batch State	Processed
Quant Batch Version	10.1	Quant Report Version	10.1
Acq. Time	10/3/2022 11:10 AM	Data File	tq100302.D
Sample Type	CC	Sample Name	2.0 uL #3318-24-0.5 CCV
Dilution	1	Acq. Method	tq22m0930marks

## Sample Chromatogram

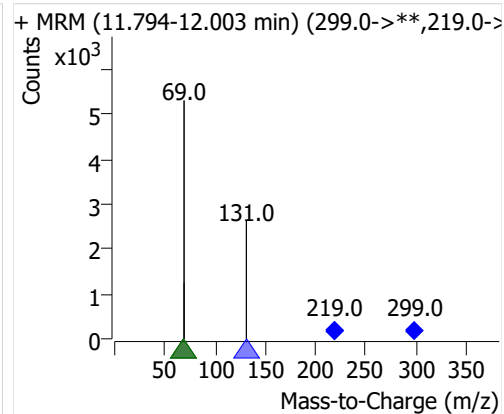
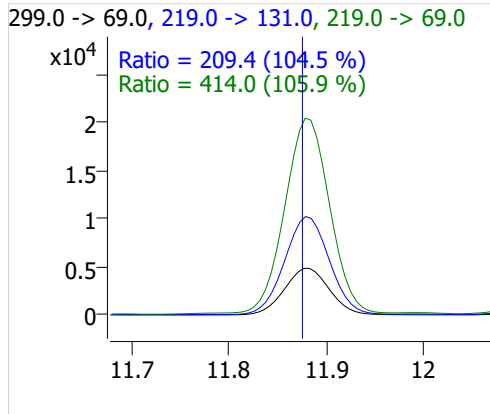
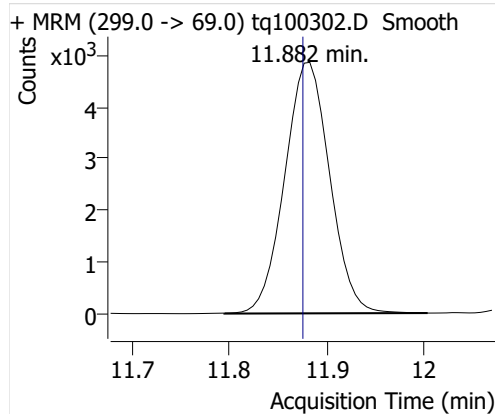


Compound	ISTD	RT	Resp.	ISTD Resp.	Resp. Ratio	Final Conc	Units
4:2 FTOH	6:2 FTOH-C13	11.819	38330	72071	0.5318	0.9675	ng
5:2sFTOH	6:2 FTOH-C13	11.882	15636	72071	0.2170	0.9168	ng
7:2sFTOH	6:2 FTOH-C13	13.183	32649	72071	0.4530	0.9519	ng
6:2 FTOH	6:2 FTOH-C13	13.209	66838	72071	0.9274	0.9185	ng
8:2 FTOH-C13	6:2 FTOH-C13	14.406	22505	72071	0.3123	0.8949	ng
8:2 FTOH	6:2 FTOH-C13	14.413	19097	72071	0.2650	0.9538	ng
10:2 FTOH	6:2 FTOH-C13	15.477	6855	72071	0.0951	0.9103	ng
12:2 FTOH	6:2 FTOH-C13	16.453	23582	72071	0.3272	0.8619	ng
NMeFOSA	6:2 FTOH-C13	18.662	17467	72071	0.2424	0.8641	ng
NEtFOSA	6:2 FTOH-C13	18.931	75013	72071	1.0408	0.8478	ng

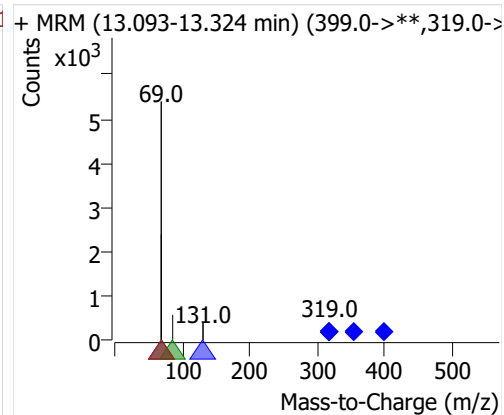
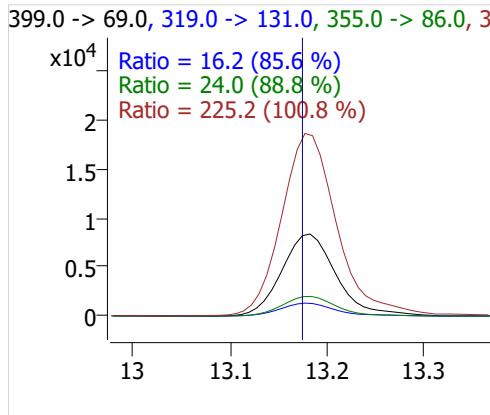
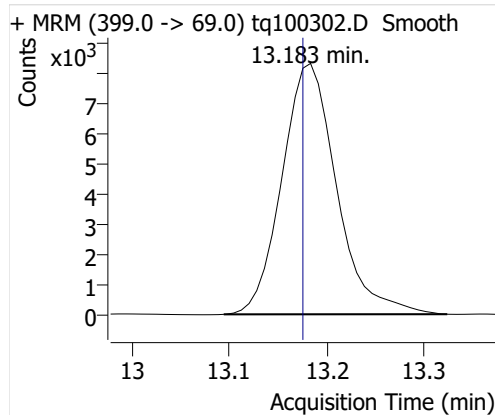
## 4:2 FTOH



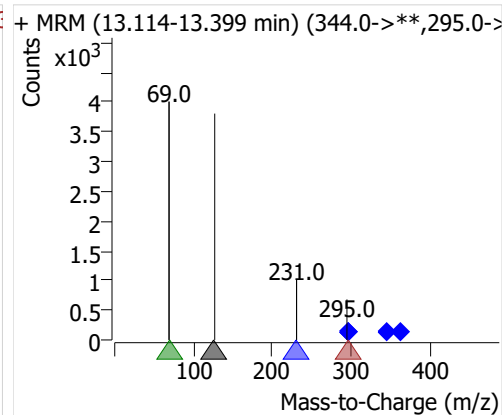
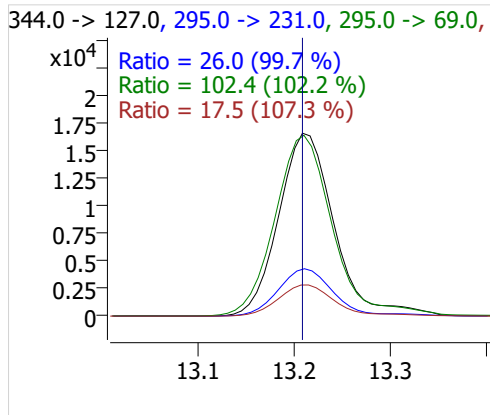
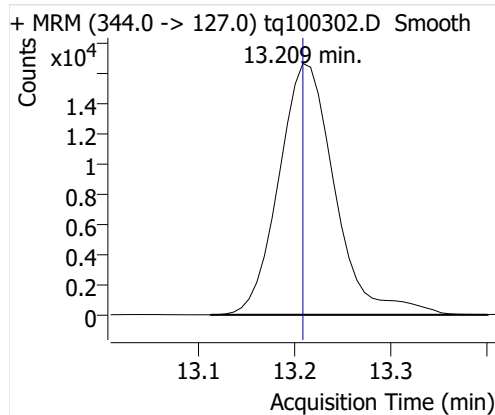
## 5:2sFTOH



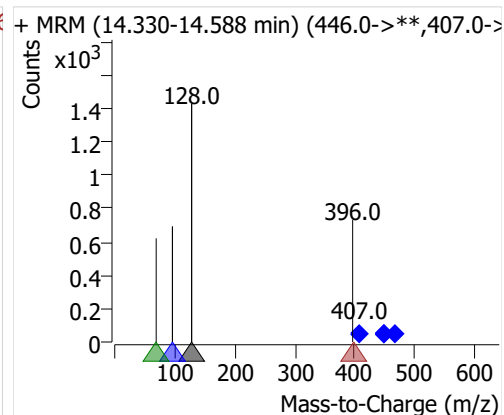
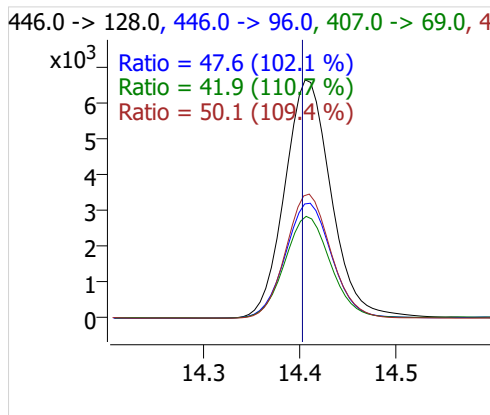
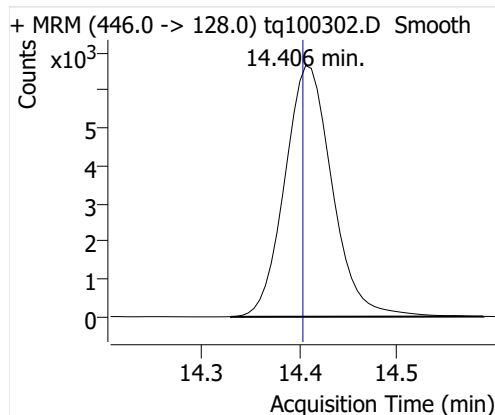
## 7:2sFTOH



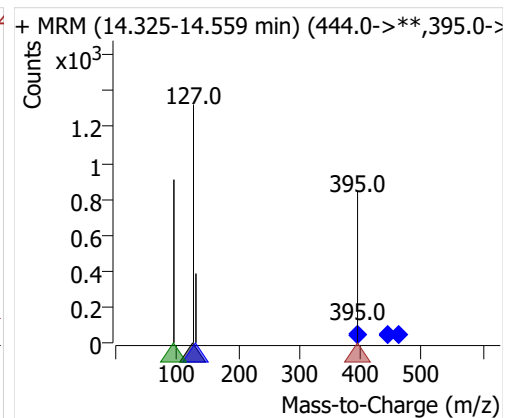
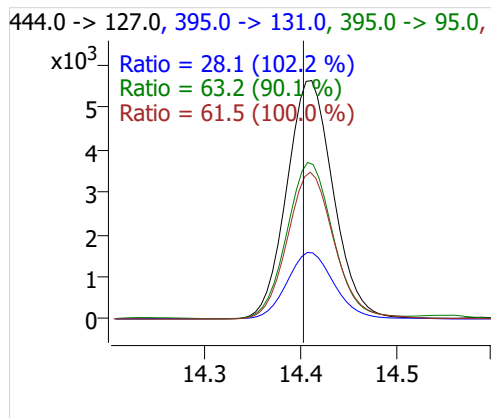
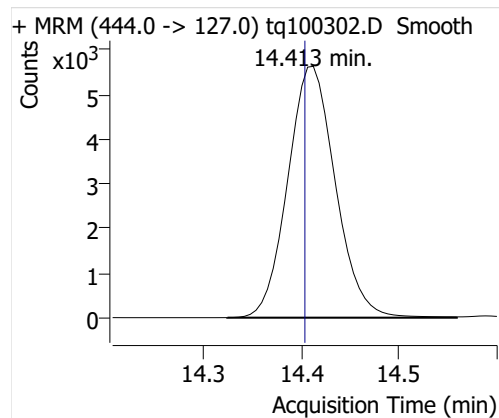
## 6:2 FTOH



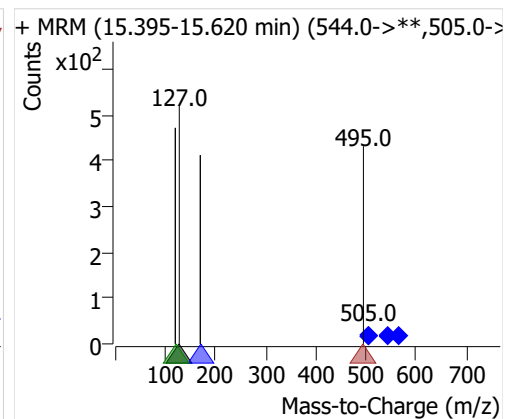
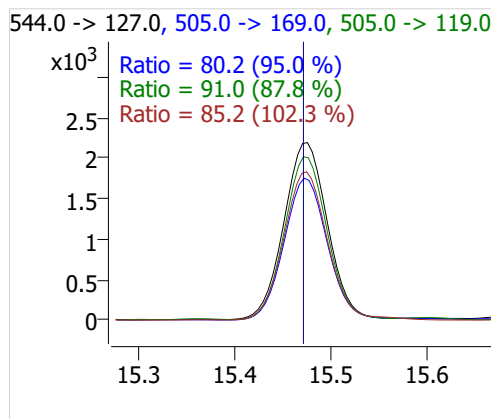
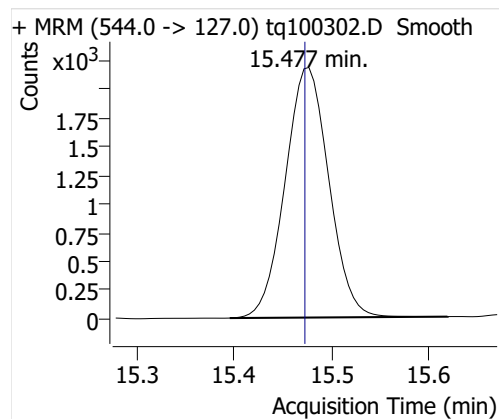
## 8:2 FTOH-C13



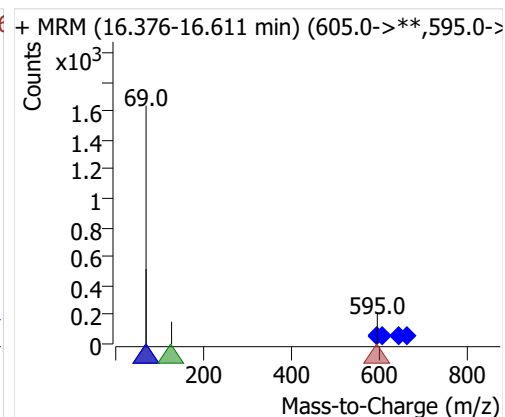
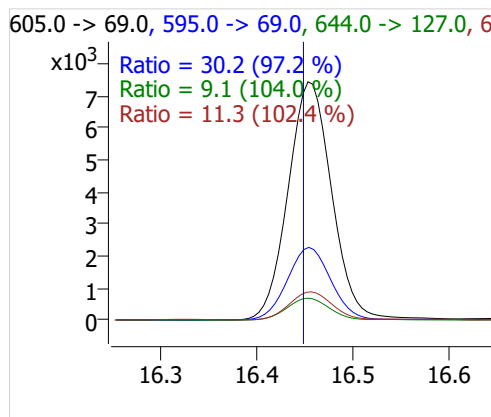
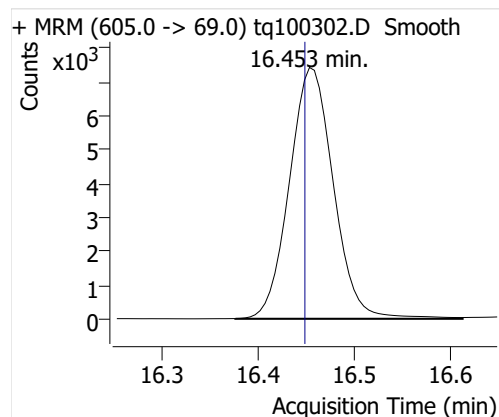
## 8:2 FTOH



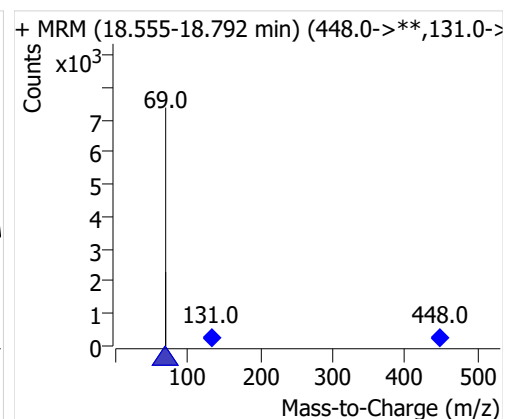
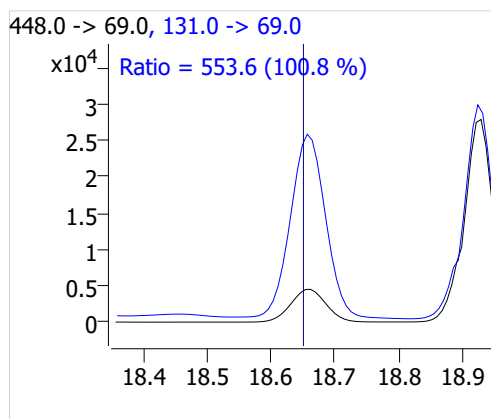
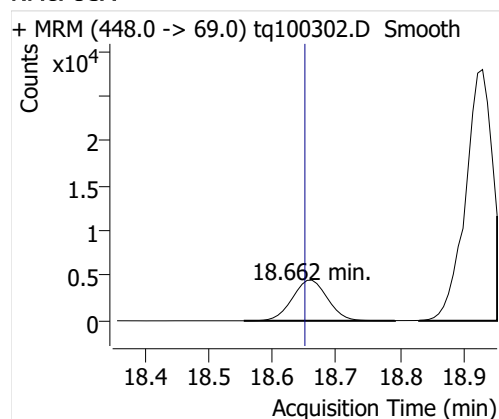
## 10:2 FTOH



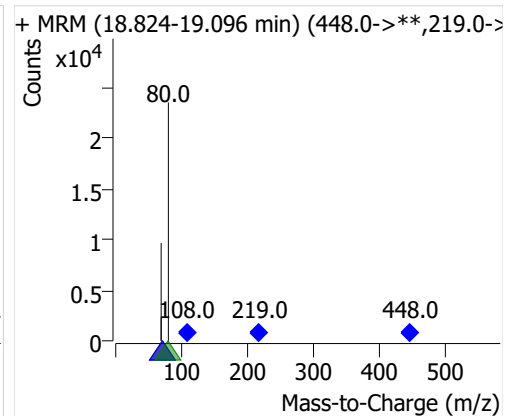
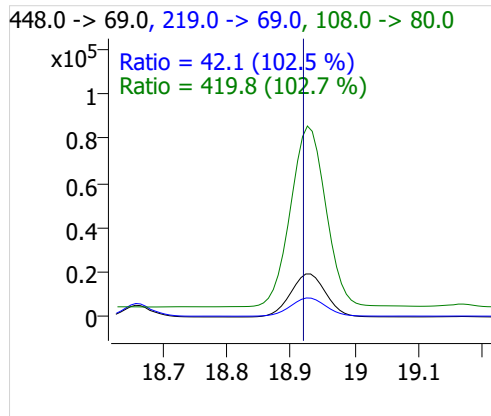
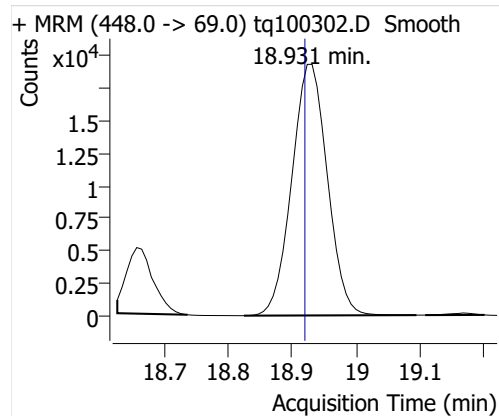
## 12:2 FTOH



## NMeFOSA



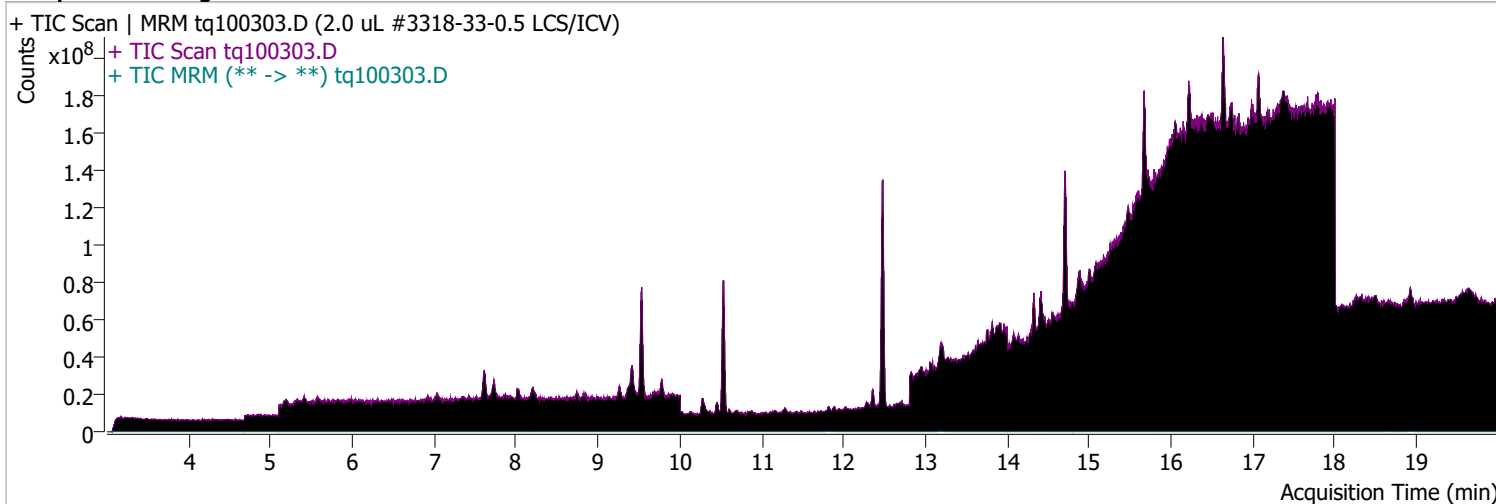
## NETFOSA



# Quantitative Analysis Sample Report

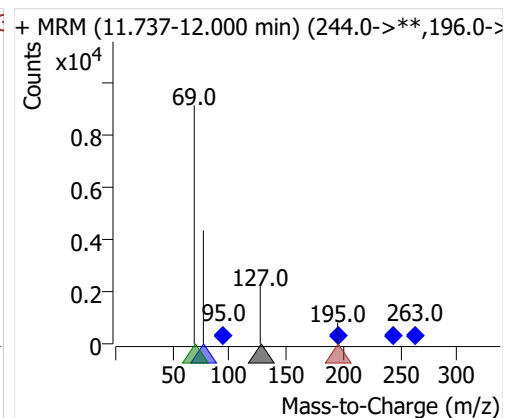
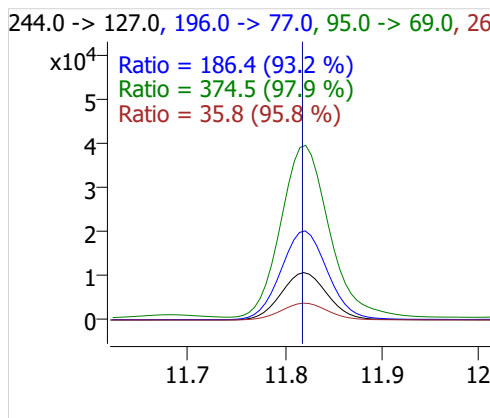
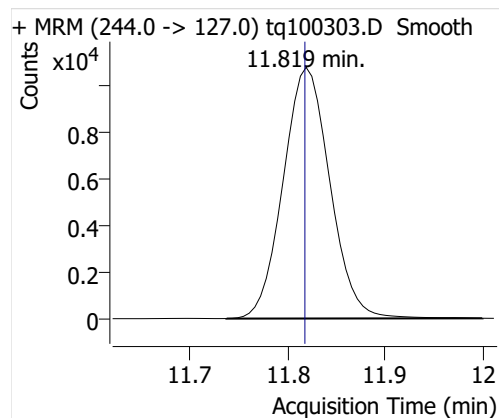
Batch Path	D:\MassHunter\GCMS\1\data\03OCT22\QuantResults\03oct22.batch.bin	Analyst Name	ES-AREA1\US32_USR_INS22923
Analysis Time	10/4/2022 8:46 AM	Reporter Name	ES-AREA1\US32_USR_INS22923
Report Time	10/28/2022 2:14:25 PM	Batch State	Processed
Last Calib Update	10/3/2022 8:55 AM	Quant Report Version	10.1
Quant Batch Version	10.1		
Acq. Time	10/3/2022 11:33 AM	Data File	tq100303.D
Sample Type	QC	Sample Name	2.0 uL #3318-33-0.5 LCS/ICV
Dilution	1	Acq. Method	tq22m0930marks

## Sample Chromatogram

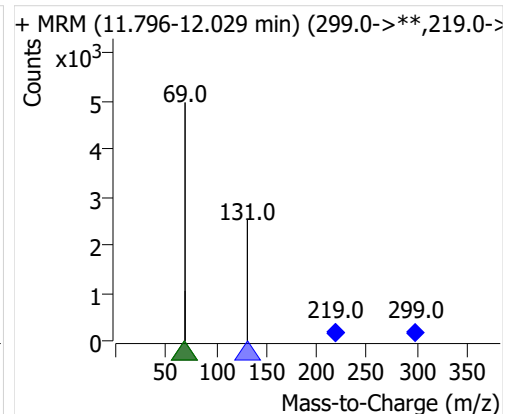
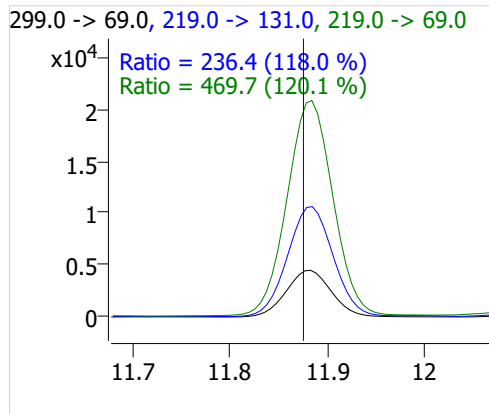
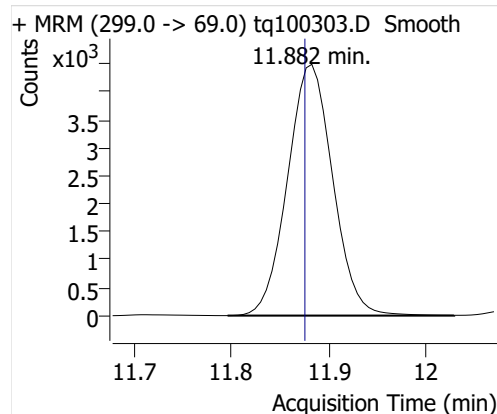


Compound	ISTD	RT	Resp.	ISTD Resp.	Resp. Ratio	Final Conc	Units
4:2 FTOH	6:2 FTOH-C13	11.819	35945	72387	0.4966	0.9034	ng
5:2sFTOH	6:2 FTOH-C13	11.882	14541	72387	0.2009	0.8489	ng
7:2sFTOH	6:2 FTOH-C13	13.183	28382	72387	0.3921	0.8239	ng
6:2 FTOH	6:2 FTOH-C13	13.209	62904	72387	0.8690	0.8606	ng
8:2 FTOH-C13	6:2 FTOH-C13	14.406	24423	72387	0.3374	0.9669	ng
8:2 FTOH	6:2 FTOH-C13	14.407	18754	72387	0.2591	0.9326	ng
10:2 FTOH	6:2 FTOH-C13	15.477	6350	72387	0.0877	0.8395	ng
12:2 FTOH	6:2 FTOH-C13	16.452	22213	72387	0.3069	0.8083	ng
NMeFOSA	6:2 FTOH-C13	18.654	18527	72387	0.2559	0.9125	ng
NEtFOSA	6:2 FTOH-C13	18.924	77943	72387	1.0768	0.8771	ng

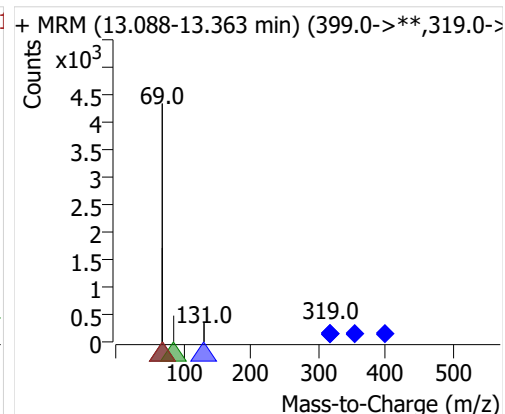
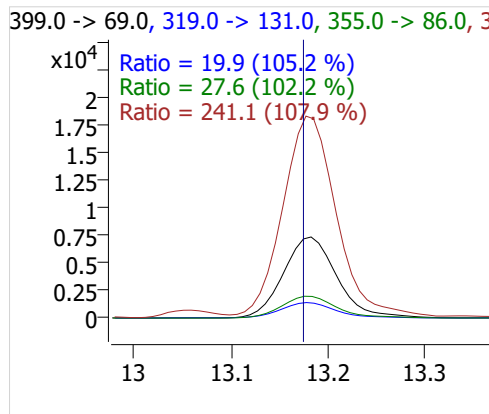
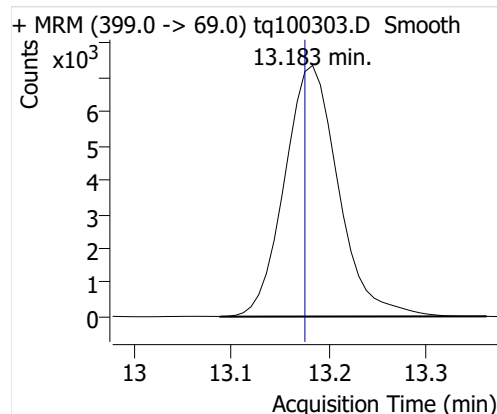
## 4:2 FTOH



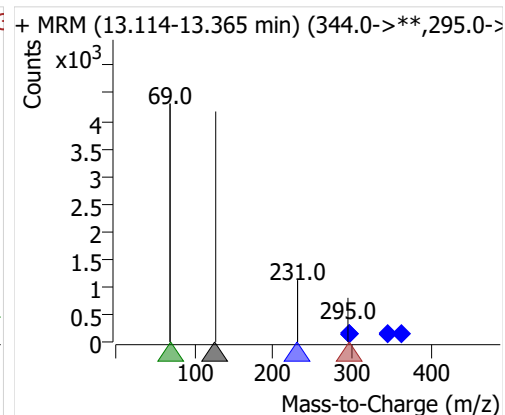
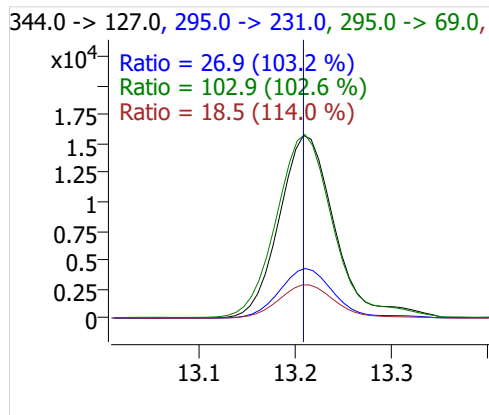
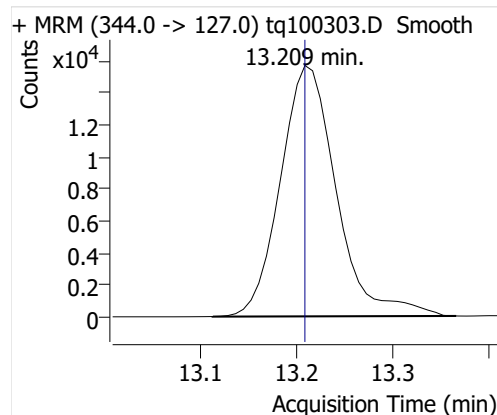
## 5:2sFTOH



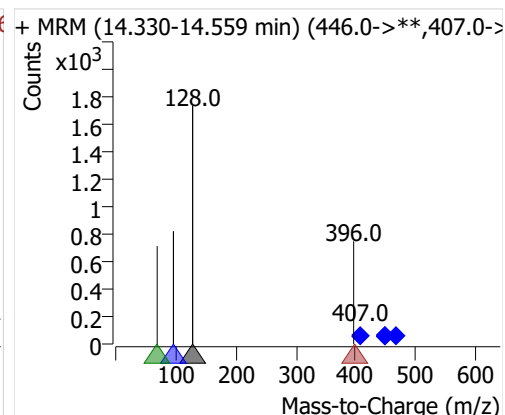
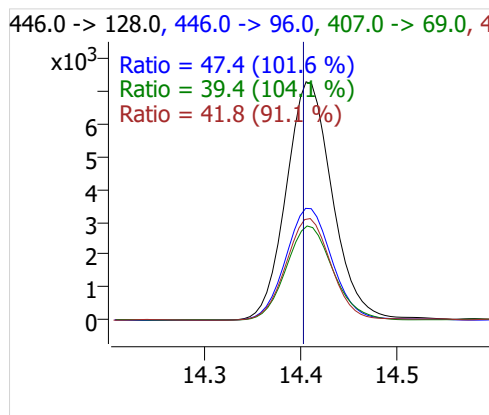
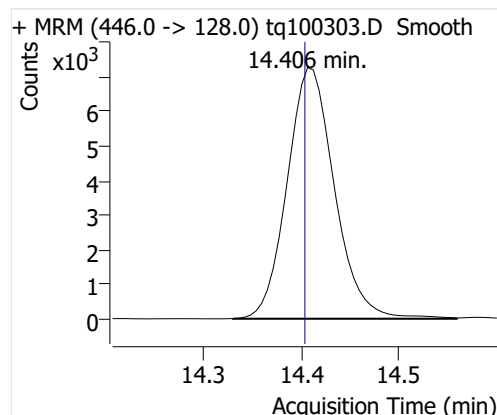
## 7:2sFTOH



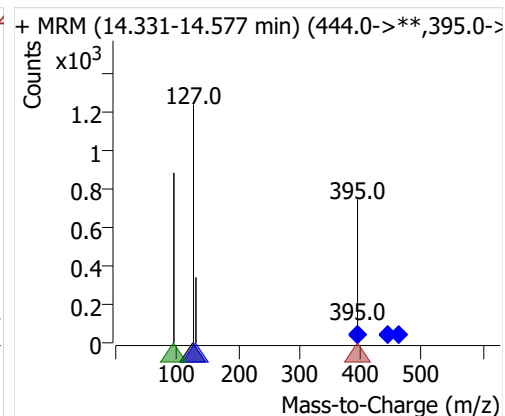
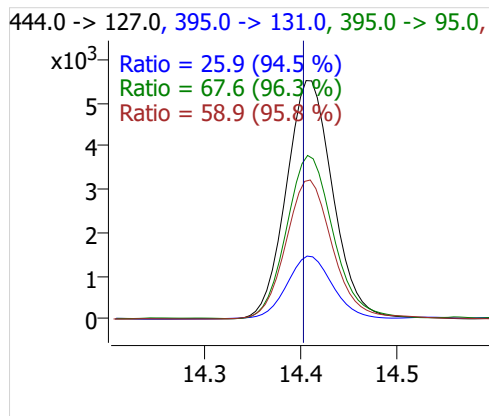
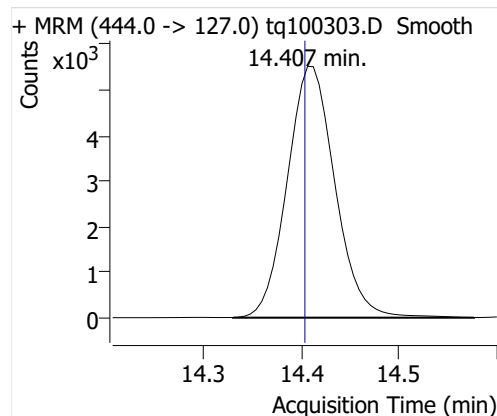
## 6:2 FTOH



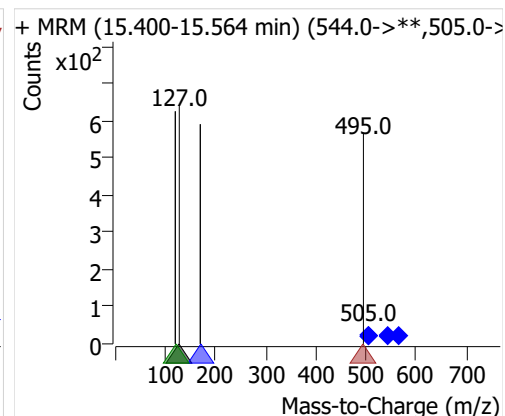
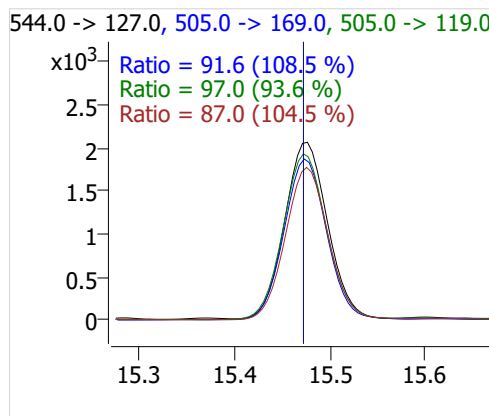
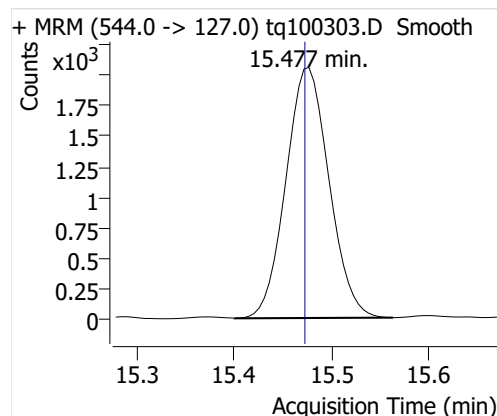
## 8:2 FTOH-C13



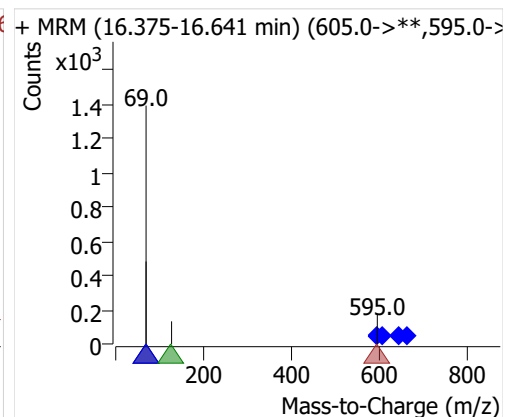
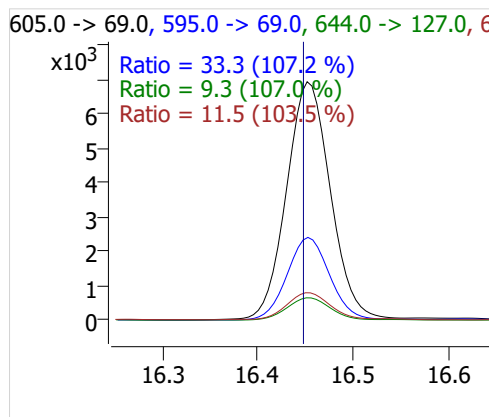
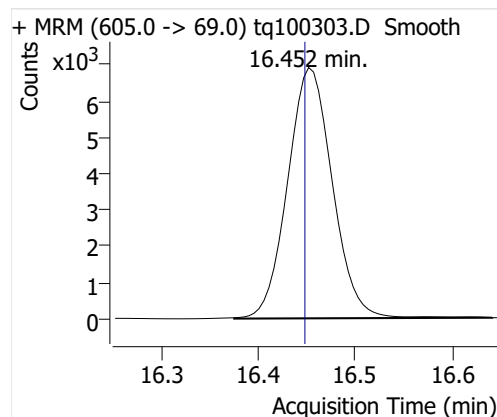
## 8:2 FTOH



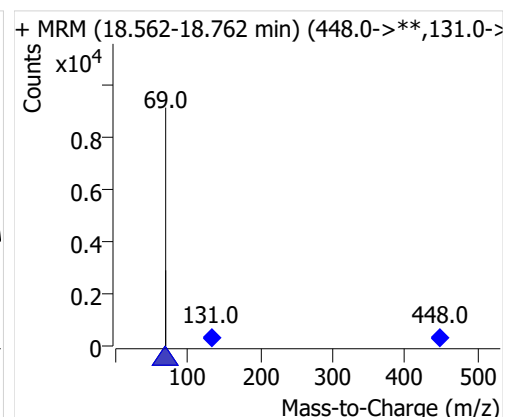
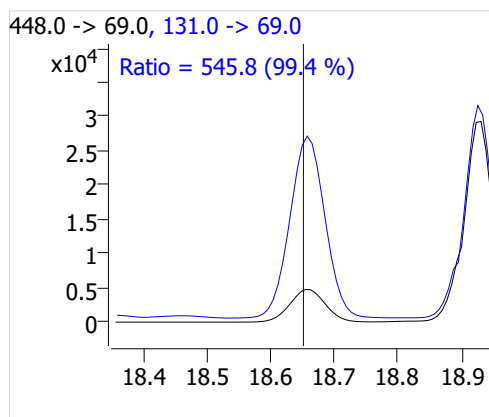
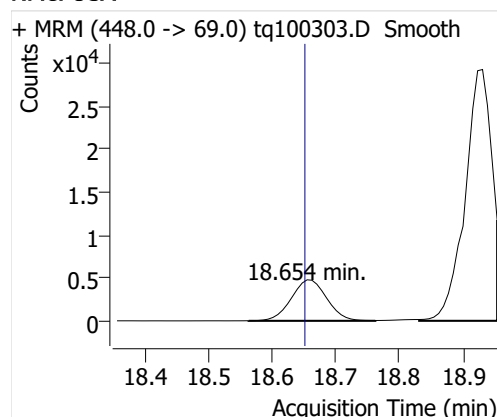
## 10:2 FTOH



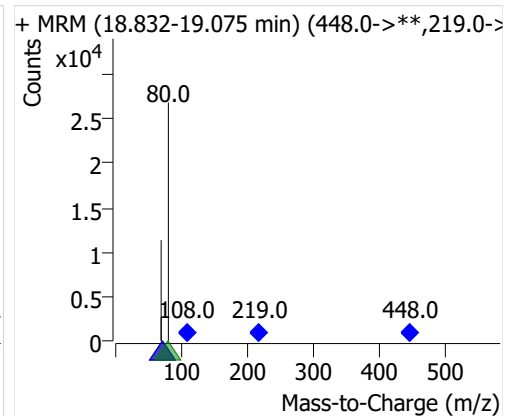
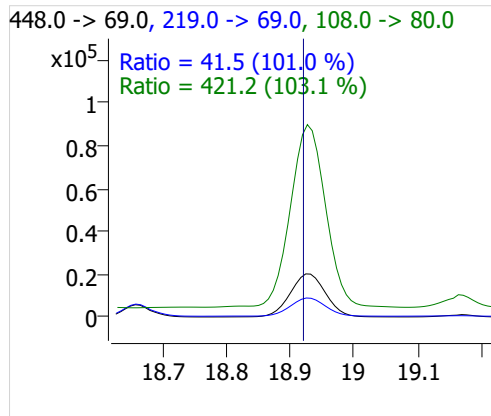
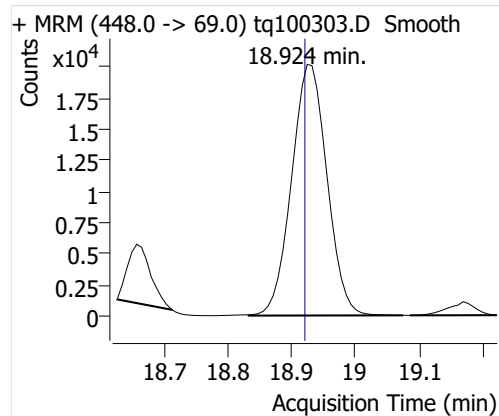
## 12:2 FTOH



## NMeFOSA



## NETFOSA

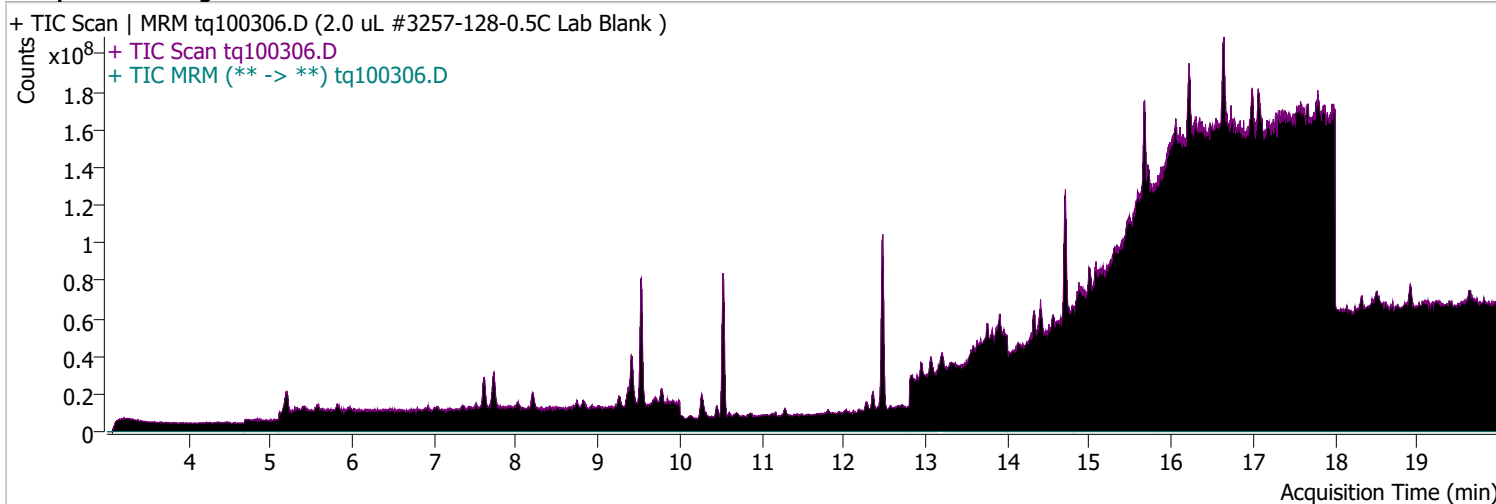




# Quantitative Analysis Sample Report

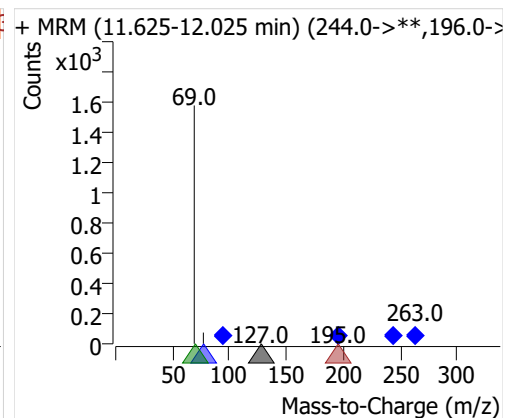
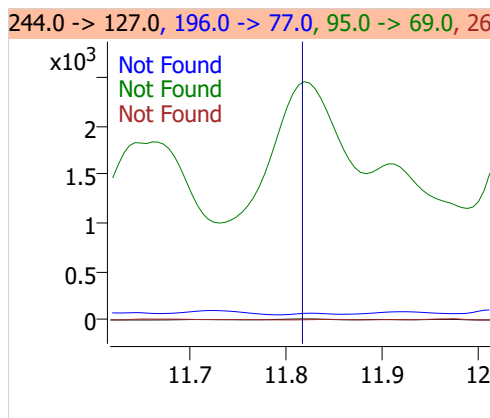
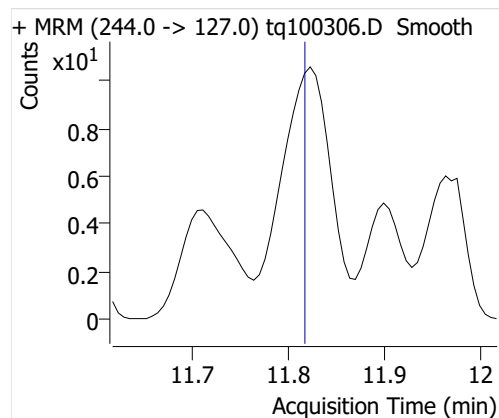
Batch Path	D:\MassHunter\GCMS\1\data\03OCT22\QuantResults\03oct22.batch.bin		
Analysis Time	10/4/2022 8:46 AM	Analyst Name	ES-AREA1\US32_USR_INS22923
Report Time	10/28/2022 2:14:27 PM	Reporter Name	ES-AREA1\US32_USR_INS22923
Last Calib Update	10/3/2022 8:55 AM	Batch State	Processed
Quant Batch Version	10.1	Quant Report Version	10.1
Acq. Time	10/3/2022 3:15 PM	Data File	tq100306.D
Sample Type	Sample	Sample Name	2.0 uL #3257-128-0.5C Lab Blank
Dilution	1	Acq. Method	tq22m0930marks

## Sample Chromatogram



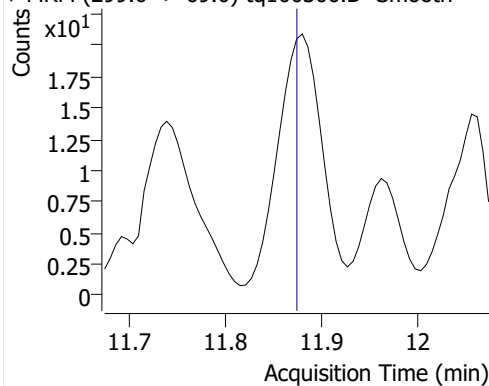
Compound	ISTD	RT	Resp.	ISTD Resp.	Resp. Ratio	Final Conc	Units
4:2 FTOH	6:2 FTOH-C13			72540		ND	ng
5:2sFTOH	6:2 FTOH-C13			72540		ND	ng
7:2sFTOH	6:2 FTOH-C13			72540		ND	ng
6:2 FTOH	6:2 FTOH-C13	13.209	2163	72540	0.0298	0.0295	ng
8:2 FTOH-C13	6:2 FTOH-C13	14.412	23369	72540	0.3222	0.9232	ng
8:2 FTOH	6:2 FTOH-C13	14.407	326	72540	0.0045	0.0162	ng
10:2 FTOH	6:2 FTOH-C13			72540		ND	ng
12:2 FTOH	6:2 FTOH-C13	16.452	379	72540	0.0052	0.0138	ng
NMeFOSA	6:2 FTOH-C13			72540		ND	ng
NEtFOSA	6:2 FTOH-C13	18.931	136	72540	0.0019	0.0015	ng

## 4:2 FTOH

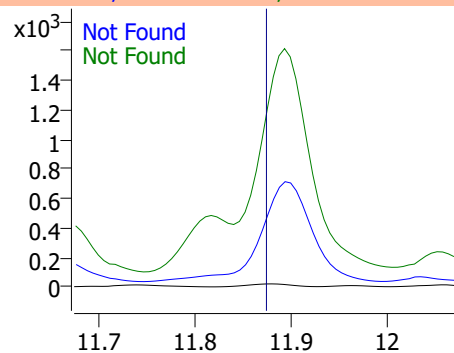


## 5:2sFTOH

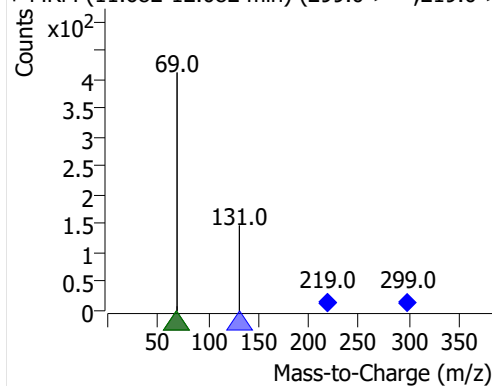
+ MRM (299.0 -&gt; 69.0) tq100306.D Smooth



299.0 -&gt; 69.0, 219.0 -&gt; 131.0, 219.0 -&gt; 69.0

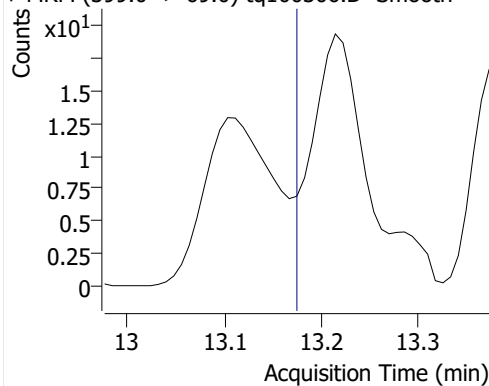


+ MRM (11.682-12.082 min) (299.0-&gt;\*\*,219.0-&gt;

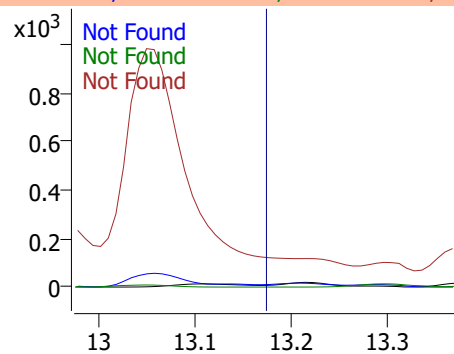


## 7:2sFTOH

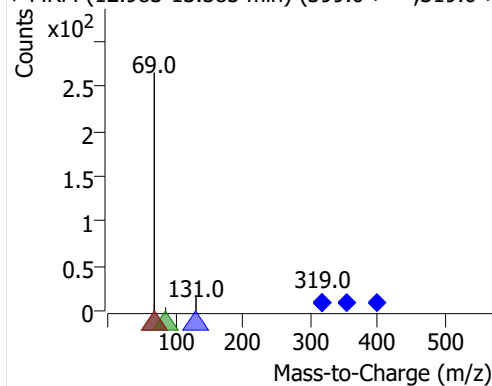
+ MRM (399.0 -&gt; 69.0) tq100306.D Smooth



399.0 -&gt; 69.0, 319.0 -&gt; 131.0, 355.0 -&gt; 86.0, 3

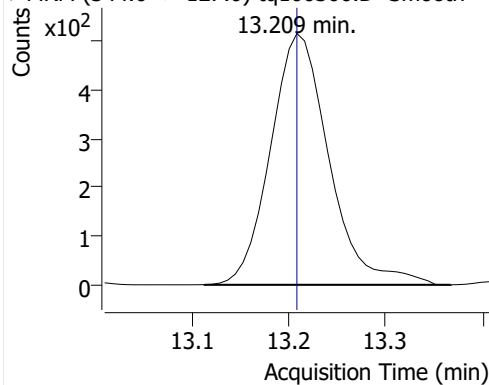


+ MRM (12.983-13.383 min) (399.0-&gt;\*\*,319.0-&gt;

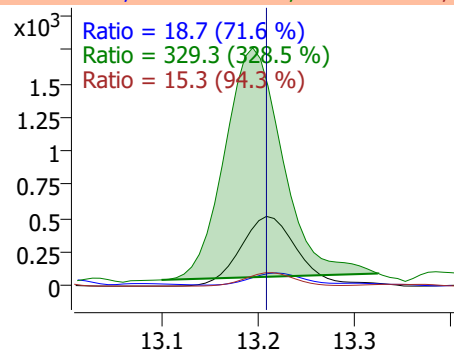


## 6:2 FTOH

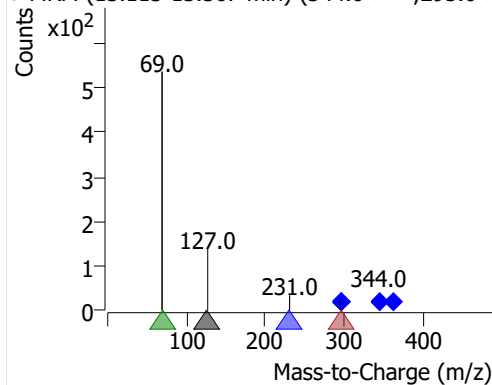
+ MRM (344.0 -&gt; 127.0) tq100306.D Smooth



344.0 -&gt; 127.0, 295.0 -&gt; 231.0, 295.0 -&gt; 69.0, 3

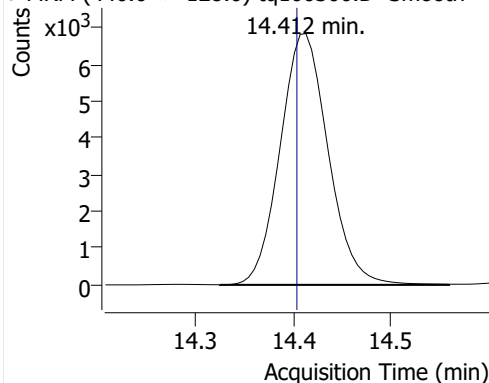


+ MRM (13.113-13.367 min) (344.0-&gt;\*\*,295.0-&gt;

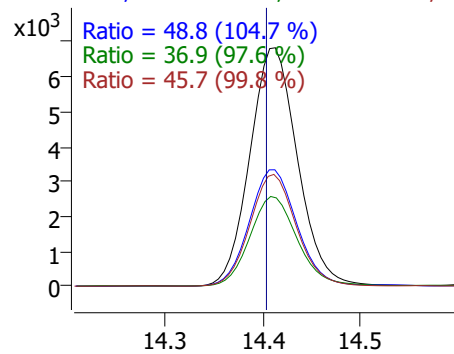


## 8:2 FTOH-C13

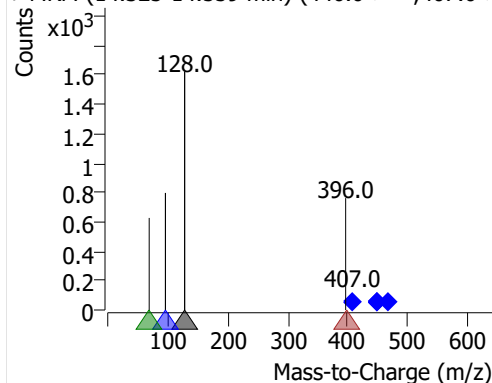
+ MRM (446.0 -&gt; 128.0) tq100306.D Smooth



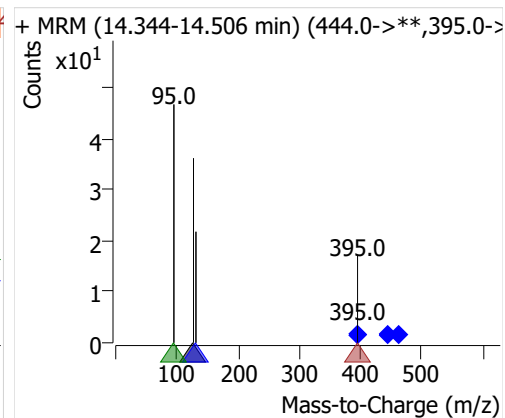
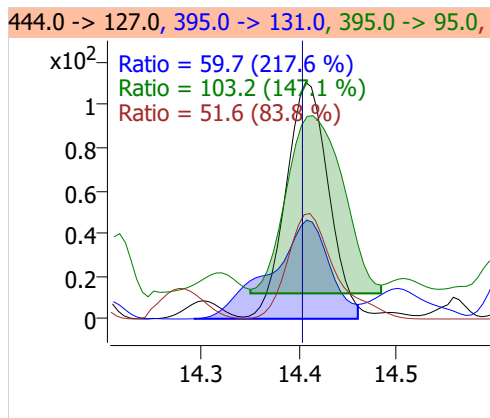
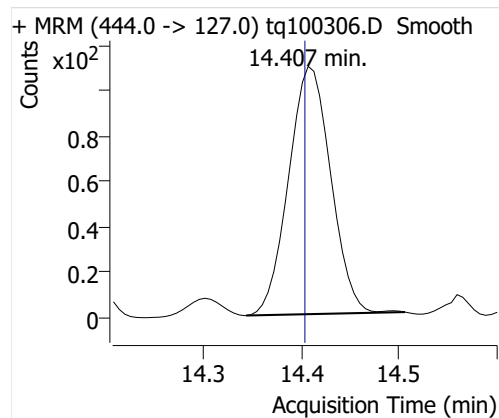
446.0 -&gt; 128.0, 446.0 -&gt; 96.0, 407.0 -&gt; 69.0, 4



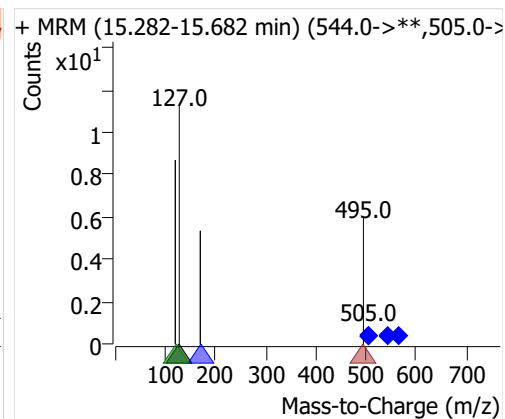
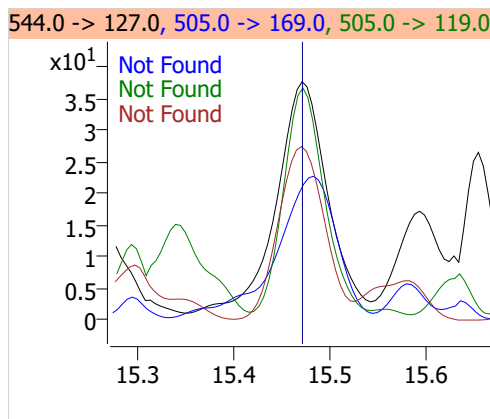
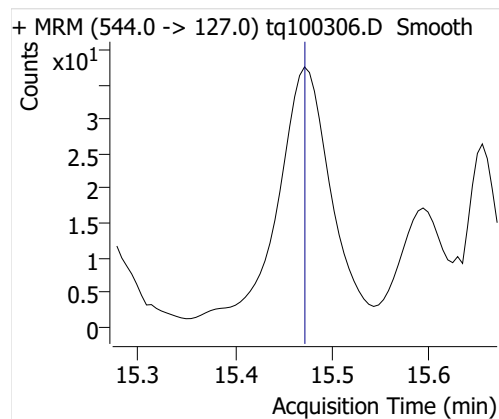
+ MRM (14.325-14.559 min) (446.0-&gt;\*\*,407.0-&gt;



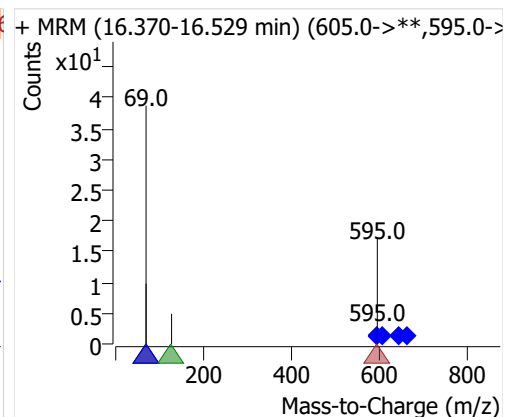
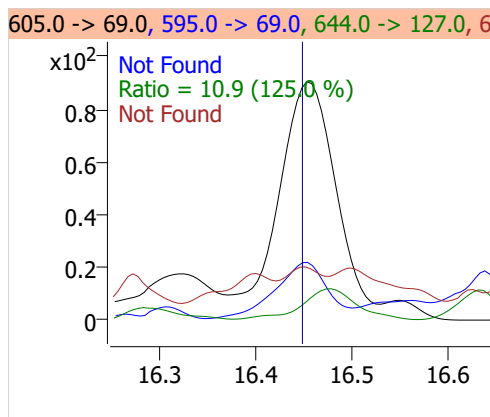
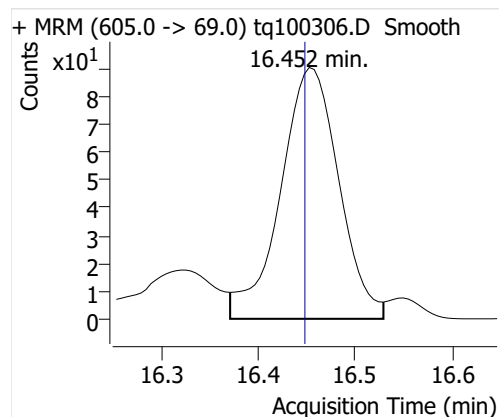
## 8:2 FTOH



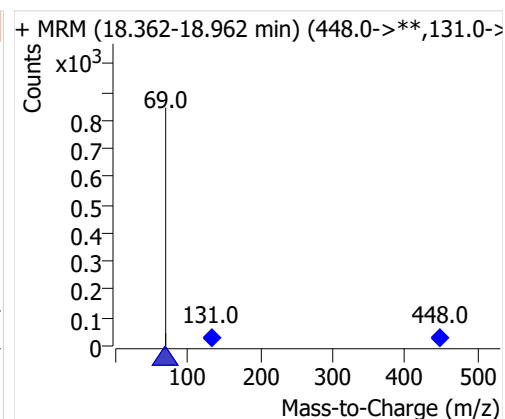
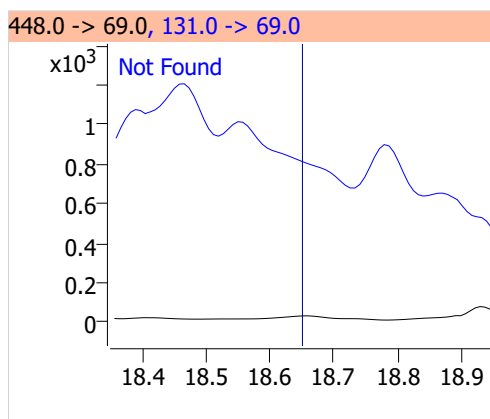
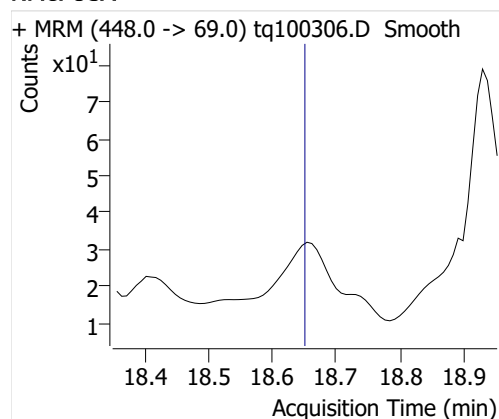
## 10:2 FTOH



## 12:2 FTOH



## NMeFOSA



## NETFOSA

